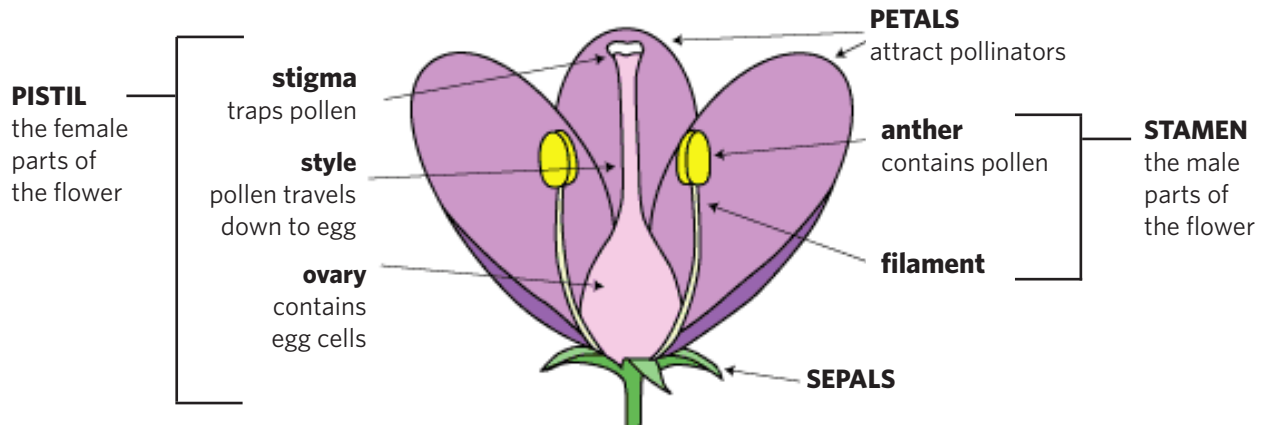


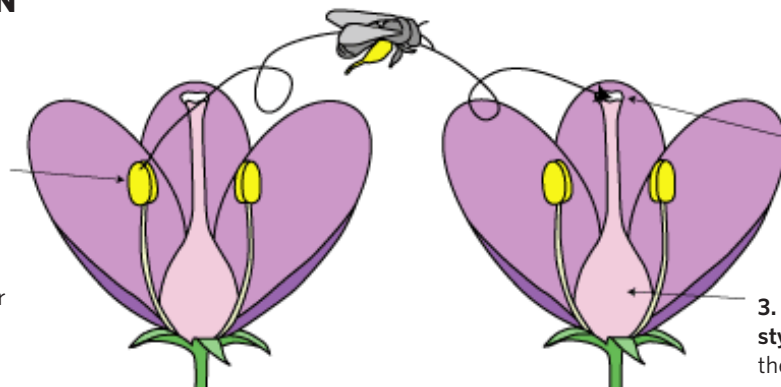
## INSIDE A FLOWER



## CROSS-POLLINATION

1. The **pollinator** receives **pollen** from the **stamen** of the first flower.

(The pollen brushes onto the pollinator's body while the pollinator drinks nectar from deep inside the base of the flower.)



2. And deposits it on the **stigma** of the next flower.

(This also happens while the pollinator drinks **nectar**.)

3. The **pollen** moves down the **style** to join with the **ovules** in the **ovary**.

### Think About It....

What if **cross-pollination** happens between two flowers of the same kind? What is **self-pollination**?